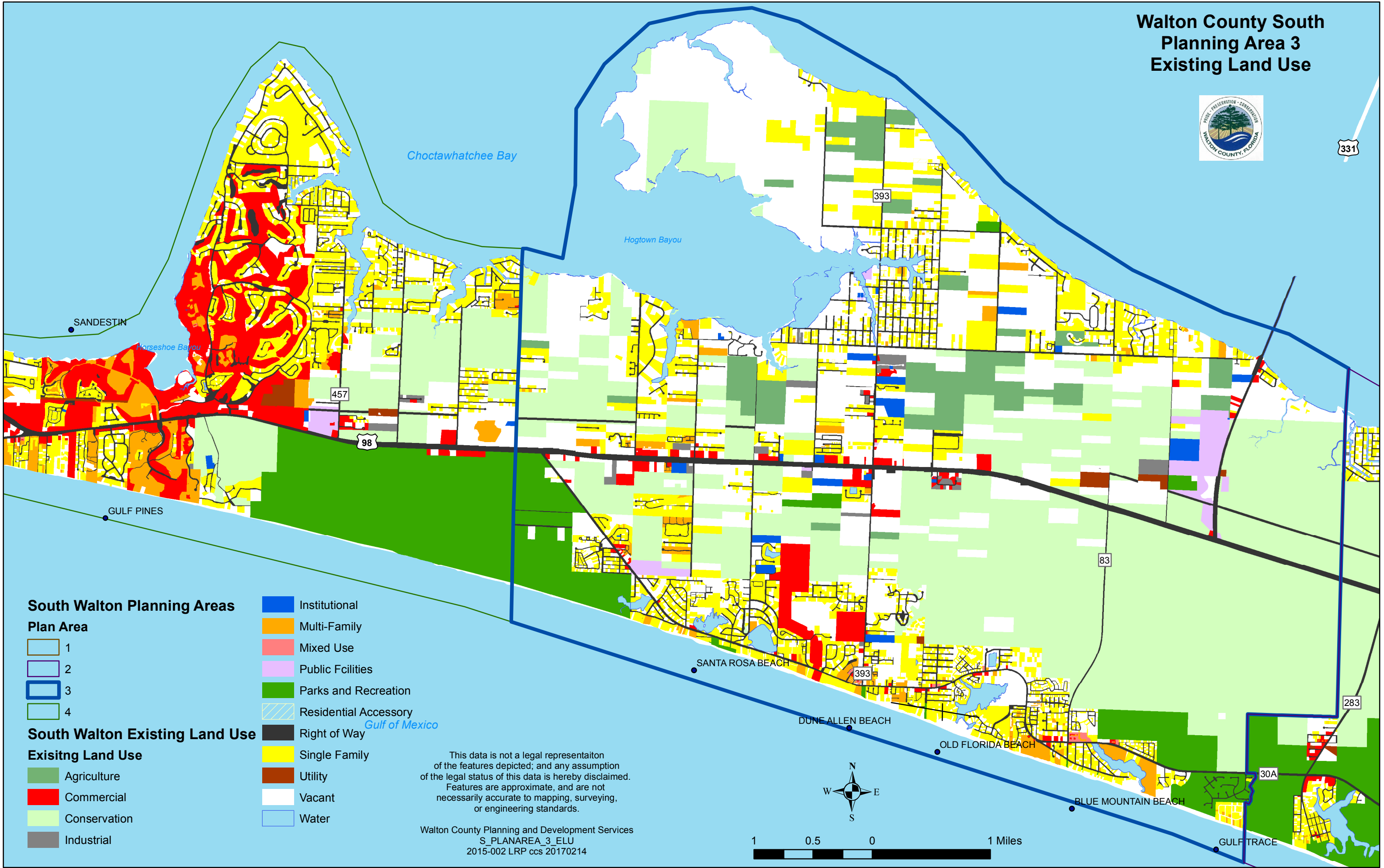


Walton County South Planning Area 3 Existing Land Use



South Walton Planning Areas

Plan Area

- 1
- 2
- 3
- 4

South Walton Existing Land Use

Existing Land Use

- Agriculture
- Commercial
- Conservation
- Industrial

- Institutional
- Multi-Family
- Mixed Use
- Public Facilities
- Parks and Recreation
- Residential Accessory
- Right of Way
- Single Family
- Utility
- Vacant
- Water

This data is not a legal representation of the features depicted; and any assumption of the legal status of this data is hereby disclaimed. Features are approximate, and are not necessarily accurate to mapping, surveying, or engineering standards.

Walton County Planning and Development Services
S_PLANAREA_3_ELU
2015-002 LRP ccs 20170214

