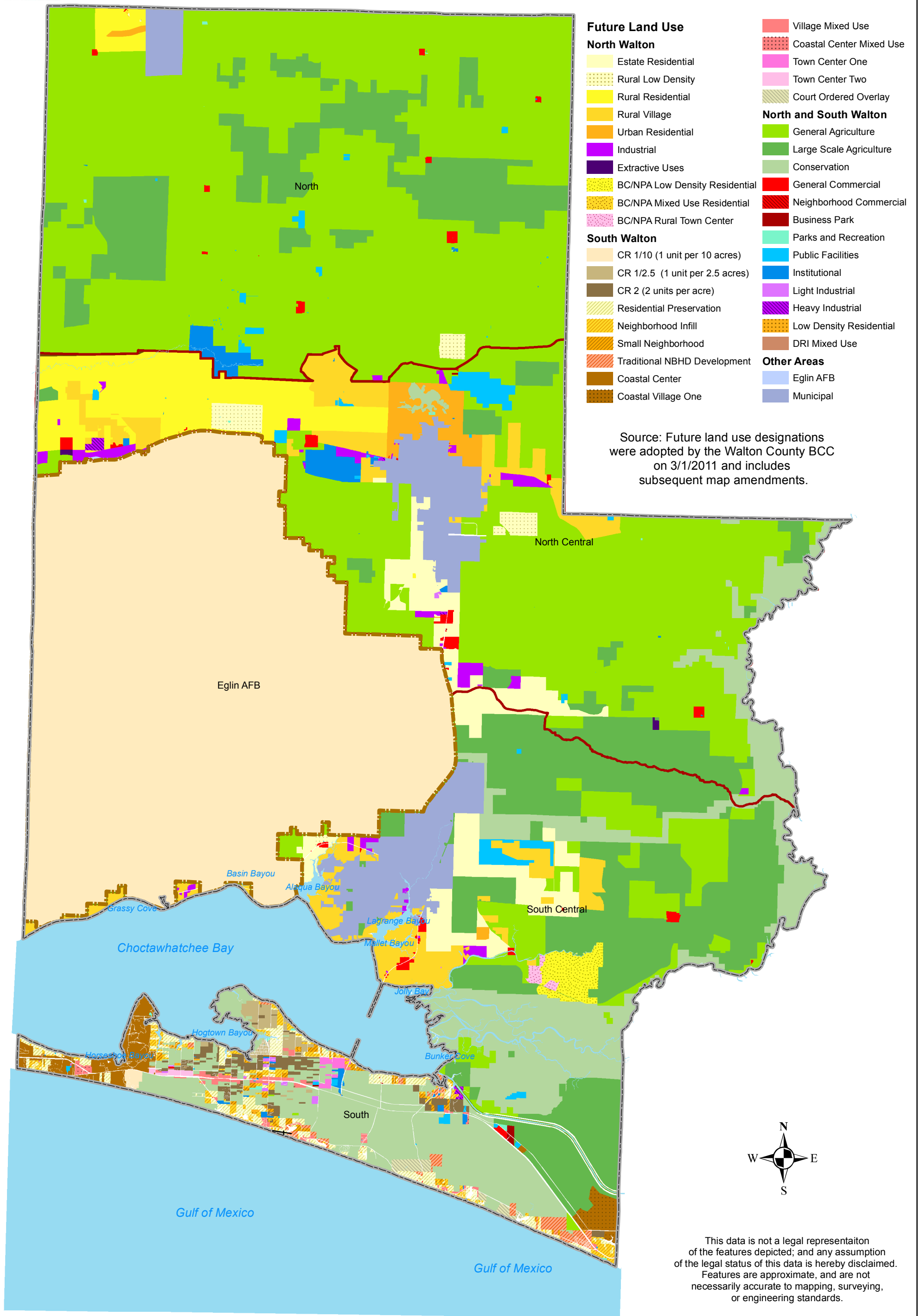


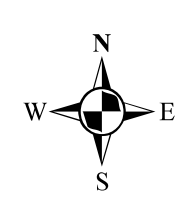


# Walton County Planning Areas



- |                               |                                 |
|-------------------------------|---------------------------------|
| <b>Future Land Use</b>        |                                 |
| <b>North Walton</b>           |                                 |
|                               | Estate Residential              |
|                               | Rural Low Density               |
|                               | Rural Residential               |
|                               | Rural Village                   |
|                               | Urban Residential               |
|                               | Industrial                      |
|                               | Extractive Uses                 |
|                               | BC/NPA Low Density Residential  |
|                               | BC/NPA Mixed Use Residential    |
|                               | BC/NPA Rural Town Center        |
| <b>South Walton</b>           |                                 |
|                               | CR 1/10 (1 unit per 10 acres)   |
|                               | CR 1/2.5 (1 unit per 2.5 acres) |
|                               | CR 2 (2 units per acre)         |
|                               | Residential Preservation        |
|                               | Neighborhood Infill             |
|                               | Small Neighborhood              |
|                               | Traditional NBHD Development    |
|                               | Coastal Center                  |
|                               | Coastal Village One             |
|                               | Village Mixed Use               |
|                               | Coastal Center Mixed Use        |
|                               | Town Center One                 |
|                               | Town Center Two                 |
|                               | Court Ordered Overlay           |
| <b>North and South Walton</b> |                                 |
|                               | General Agriculture             |
|                               | Large Scale Agriculture         |
|                               | Conservation                    |
|                               | General Commercial              |
|                               | Neighborhood Commercial         |
|                               | Business Park                   |
|                               | Parks and Recreation            |
|                               | Public Facilities               |
|                               | Institutional                   |
|                               | Light Industrial                |
|                               | Heavy Industrial                |
|                               | Low Density Residential         |
|                               | DRI Mixed Use                   |
| <b>Other Areas</b>            |                                 |
|                               | Eglin AFB                       |
|                               | Municipal                       |

Source: Future land use designations were adopted by the Walton County BCC on 3/1/2011 and includes subsequent map amendments.



This data is not a legal representation of the features depicted; and any assumption of the legal status of this data is hereby disclaimed. Features are approximate, and are not necessarily accurate to mapping, surveying, or engineering standards.

