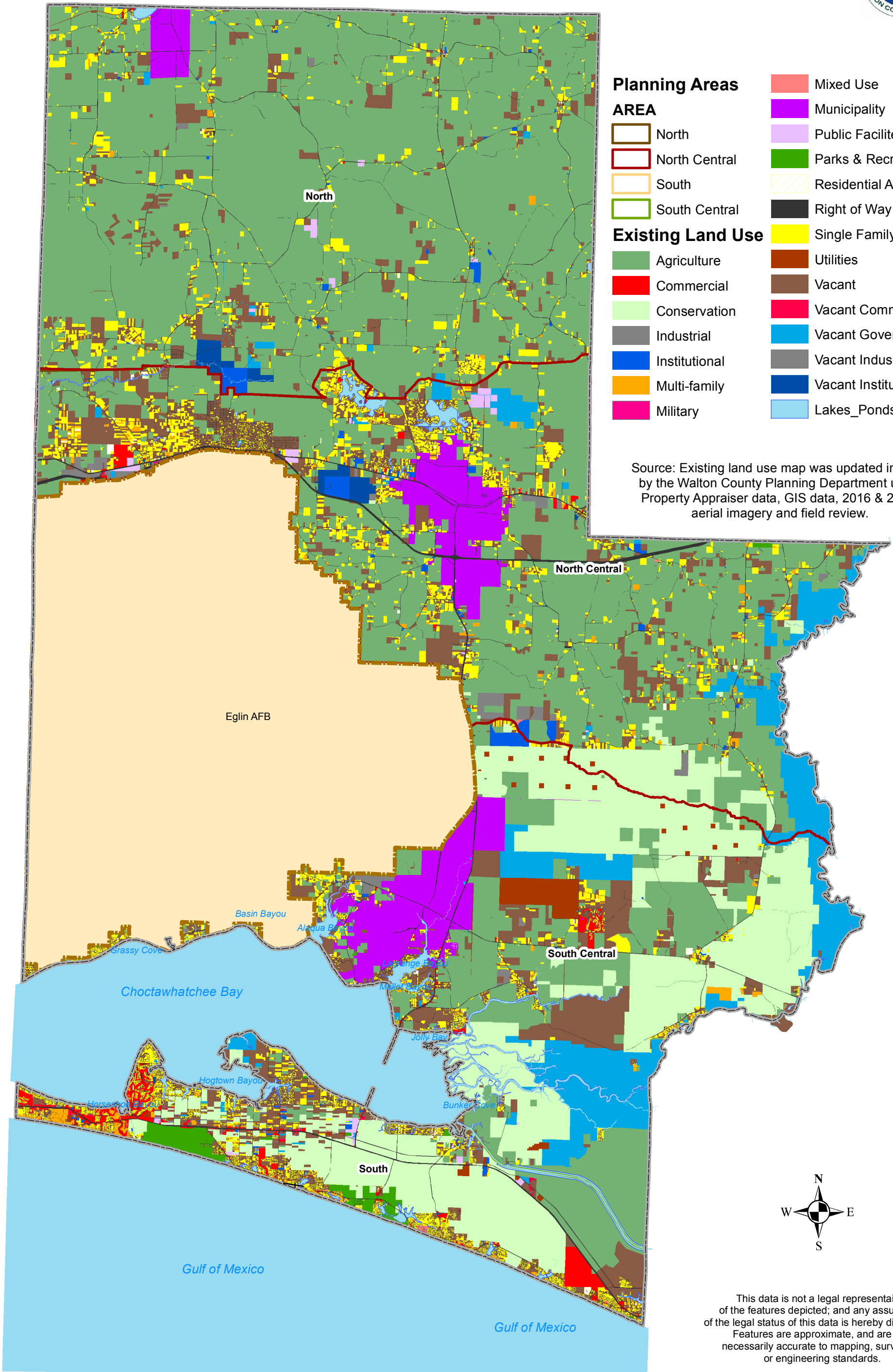


Walton County Planning Areas Existing Land Use



- | | |
|--------------------------|-----------------------|
| Planning Areas | Mixed Use |
| AREA | Municipality |
| North | Public Facilities |
| North Central | Parks & Recreation |
| South | Residential Accessory |
| South Central | Right of Way |
| Existing Land Use | Single Family |
| Agriculture | Utilities |
| Commercial | Vacant |
| Conservation | Vacant Commercial |
| Industrial | Vacant Government |
| Institutional | Vacant Industrial |
| Multi-family | Vacant Institutional |
| Military | Lakes_Ponds |

Source: Existing land use map was updated in 2016 by the Walton County Planning Department using Property Appraiser data, GIS data, 2016 & 2013 aerial imagery and field review.



This data is not a legal representation of the features depicted; and any assumption of the legal status of this data is hereby disclaimed. Features are approximate, and are not necessarily accurate to mapping, surveying, or engineering standards.